

Please review these instructions for preparing your long abstract for the ENC.

Title: Start on Top Line, Use Capitalization Only on First Letter of Major Words, Center, Bold, 10 pt. The Title May Use More Than One Line

(Blank line)

List authors here. Capitalize only the first letter of names. Affiliations below should be the same font size.

(Blank line)

Affiliations of Authors. This is Arial 10 pt.

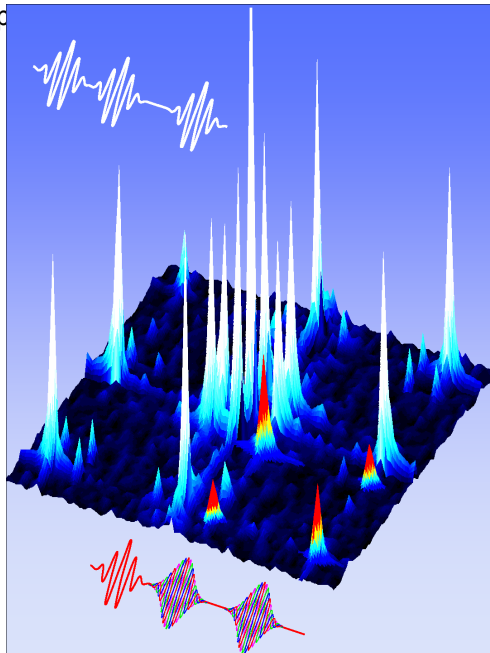
(Blank line)

Please follow these instructions for preparing your long abstract for the ENC CD ROM that will be distributed at the conference. **The program committee will use the long abstracts as its primary information for determining which presentations should be accepted or rejected and which presentations should be given oral slots.**

Your document must be submitted as a file in one of the following formats: PDF (preferred) or Microsoft Word for either PC or MAC. No other word processor programs are supported.

The long abstract will not be considered an official publication and will **NOT** be copyrighted to ENC nor will the ENC in any other way claim any right to material included on the CD. The author will retain all rights to material included on the CD.

PDF format: The CD will be comprised of PDF formatted documents. Extended abstract submission in PDF format is recommended to ensure that your abstract will appear exactly as you wish. When using Adobe Acrobat to prepare a PDF file, specify "Printer Optimized" in the create PDF screen and in Adobe Distiller. Verify that the file will not be locked by opening Adobe Distiller/Job Options/ Security, and making sure that no boxes are clicked. **Non-standard fonts can be used** in the abstract if you open Adobe Distiller/Settings/Job Options/Fonts and select "Embed All Fonts." **Feel free to use color for emphasis**, but **don't overdo it or it becomes distracting!** If instead you provide a Word file, we will convert it to a PDF file; please view your PDF file in Adobe Acrobat Reader to check for proper format conversion and to be sure that that your abstract is no more than one page long. It is suggested that you check figures and replace



Leave a blank line after the title, authors and affiliation(s) as illustrated above. The body of your abstract should follow these guidelines.

- **Length.** No more than one page, including figures and references.
- **Page set up.** Margin settings: .5 inch on top and bottom, .5 inch right and left. Header, footer, gutter settings: Set to 0.
- **Paper size.** 8.5 x 11 inches, portrait (vertical) layout.
- **Justification.** Select "justified" or "block".
- **Recommended Font.** Use a non serif font such as Arial or Helvetica. This is Arial.
- **Font size.** 10 pt. This is 10 pt.
- **Page numbers.** None. **Do not** use page numbers.
- **Line spacing.** Single. **Do not** specify "exact" or "at least" spacing.
- **Headers, footers.** None. **Do not** use headers or footers.
- **Paragraphs.** Leave one blank line between paragraphs.
- **Figures.** Figures and graphs must be embedded in the document and may be in FULL COLOR. No attached or linked files will be accepted.
- **References and Acknowledgements.** 10 point same as text

Figure 1. Two-dimensional spectra can look really cool with the right coloration. Note that all science has been removed from this figure!

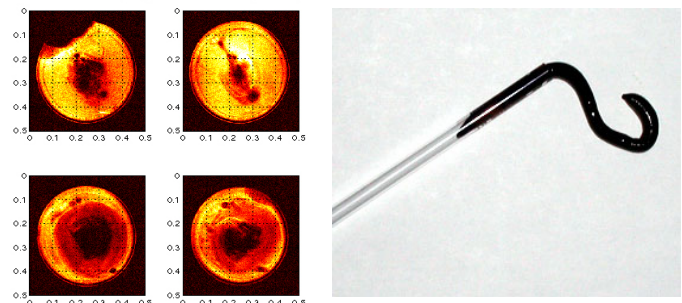


Figure 2. Earthworms permit in vivo imaging with easy shimming, no NIH regulations, and little motion (when the tube is cooled). When the worms are returned to the ground, they have great stories for their friends!